

FITC-equivalent Human Claudin 18.2 Protein-VLP



Cat. No. CLD-HM0P9

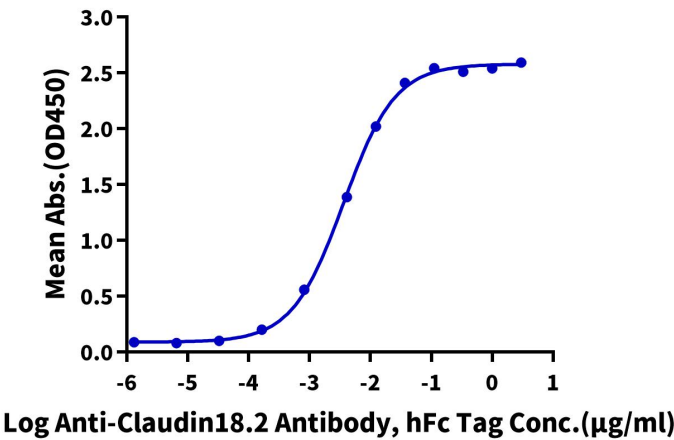
Description	
Source	Human Claudin 18.2 Protein-VLP is expressed from HEK293. It contains Met1-Val261 (It may have cross reaction with anti-His antibody).
Accession	P56856-2
Molecular Weight	The target protein has a predicted MW of 29 kDa.
Wavelength	Excitation Wavelength: 490 nm Emission Wavelength: 520 nm
Endotoxin	Less than 1 EU per µg by the LAL method.

Formulation and Storage	
Formulation	Supplied as 0.22 µm filtered solution in PBS, 150mM L-Arginine (pH 7.4).
Storage	Valid for 12 months from date of receipt when stored at -80°C. Recommend to aliquot the protein into smaller quantities for optimal storage. Please minimize freeze-thaw cycles.

Background	
Claudin18 (CLDN18) belongs to the large claudin family of proteins, which form tight junction strands in epithelial cells. CLDN18 is specifically expressed in the stomach and lung. CLDN18 has two alternatively spliced variants, CLDN18.1 and CLDN18.2. Isoform 2 (Claudin 18.2) is abundant in gastric tumors.	

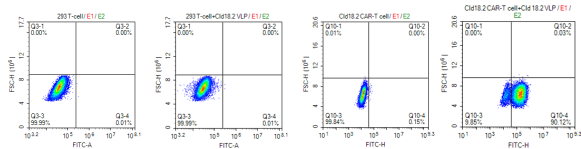
Assay Data	
ELISA Data	

Human Claudin18.2 VLP ELISA
0.5µg Human Claudin 18.2 VLP Per Well



Immobilized FITC-equivalent Human Claudin 18.2 VLP at 5 µg/ml (100 µl/Well). Dose response curve for Anti-Claudin 18.2 Antibody, hFc Tag with the EC50 of 3.6ng/ml determined by ELISA (QC Test).

FACS Data



FITC-equivalent Human Claudin 18.2 VLP can effectively bind to Anti-Claudin 18.2 CAR-T cells as determined by flow cytometry.